



STUDIO LIGHT



**Real Power Development** SARL  
Power & Automation Engineering



*of Confidence*

## ABOUT

*Real Power is specialized in Electrical Engineering and Power Development. It offers an expertise in manufacturing low voltage power distribution and control panel board since 2008. Real Power is distinctive by its high quality technics that are in conformity with international standards.*

### Our Values

-  **Integrity:** We emphasize our company's reputation, create transparency towards our customers, and maintain a high level of ethics that will let us offer them the greatest reliability and quality of experience.
-  **Innovation:** Innovating is our passion. We exert non-stop improvements and the creation of better solutions for the future.
-  **Performance Excellence:** We challenge ourselves to deliver excellence and focus on exceeding our customers' expectations.
-  **Commitment:** We are committed to satisfying our customers' needs. We believe that remaining faithful to our customers and paying attention to their requests will lead us to long partnership relations.

### No 3rd party,

Our team covers all the services without the intervention of a third party.

# COMPANY STRUCTURE



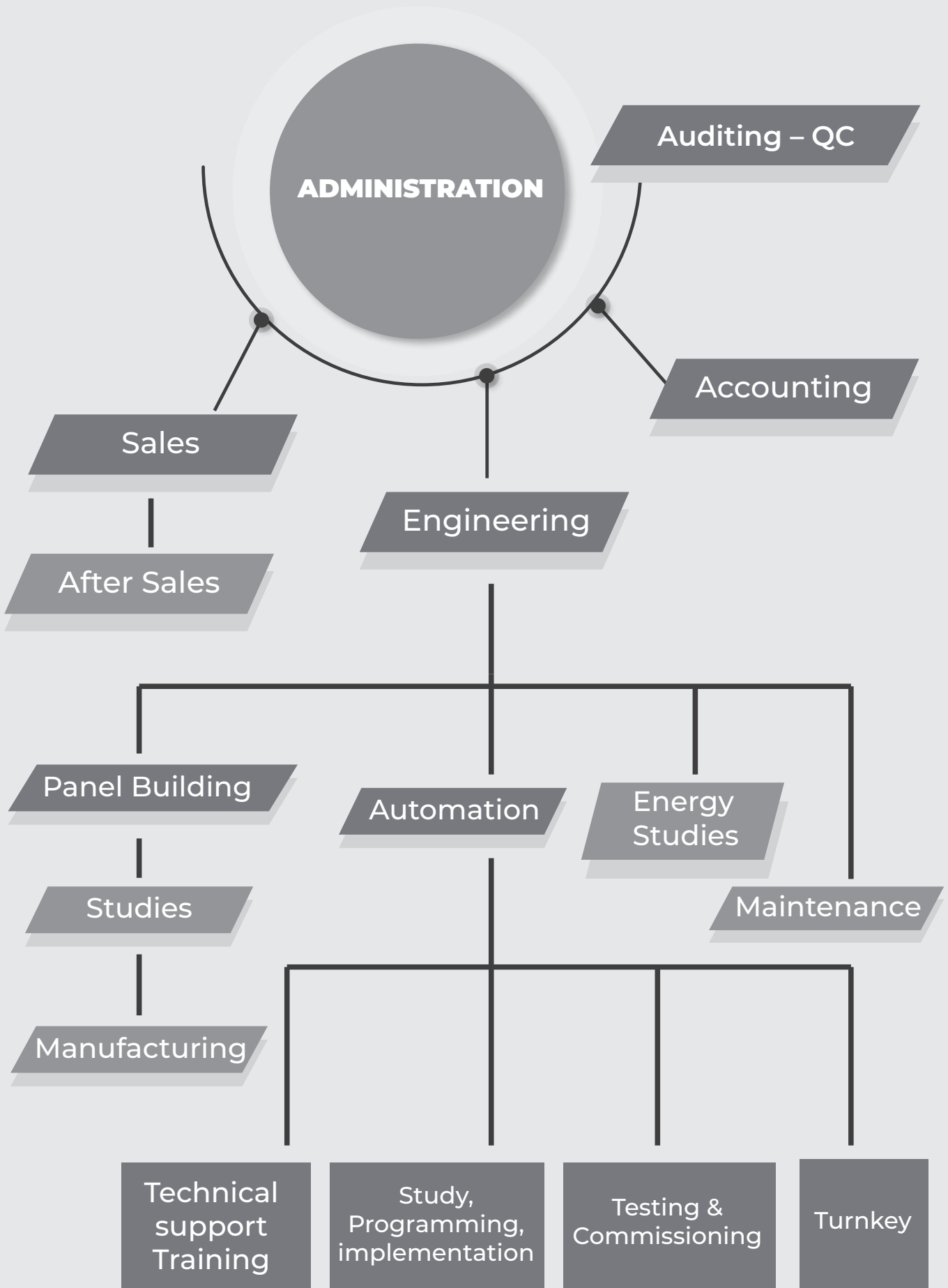
**REAL - POWER DEVELOPMENT**

**SUPER PANEL**

**COMPLEX**  
engineering



# ORGANIZATION CHART



# MAIN ACTIVITIES

## POWER DIVISION

LV PANEL BOARD ASSEMBLY FOR INDUSTRIAL, DATA CENTER & BUILDINGS >6400A ACCORDING TO IEC

MV INSTALLATION, TESTING & COMMISSIONING FROM 5.5 TO 24KV FOR PRIVATE SUBSTATIONS ACCORDING TO IEC

INDUSTRIAL POWER & AUTOMATION TURNKEY SOLUTION

ONGRID / OFFGRID GREEN ENERGY STUDIES AND EXECUTION

HARMONICS FILTERING & REACTIVE POWER COMPENSATION

MAINTENANCE

FULL TECHNICAL SUPPORT



## **AUTOMATION DIVISION**

### **Smart Cities**

- IOT / IIOT --- **Prepaid and Post Paid Metering**

### **AUTOMATION OPERATION & SCADA SYSTEM**

POWER PLANT

HV /MV STATIONS & SUBSTATIONS Operation & Monitoring

INDUSTRY

ADVANCED BUILDING MANAGEMENT SYSTEM

**PV - Energy Management - Battery Storage System - EV Stations**

### **MAINTENANCE**

### **FULL TECHNICAL SUPPORT / TRAINING**



## COMPANIES REPRESENTATIVE



WAGO - AUTOMATION  
(GERMANY)



Your Independent Global **SCADA** Provider



SOLAR TECHNOLOGY



S+S REGELTECHNIK



QUADRITALIA PANEL  
BOARD (ITALY)

TOZZI INDUSTRIES

TOZZI INDUSTRIES -MV  
SWITCHGEAR - (ITALY)



# COMPANIES SOLUTION PROVIDER

## IN AUTOMATION SECTOR

WAGO AUTOMATION-CERTIFIED

PCVIEW - SCADA CERTIFIED

## IN POWER SECTOR

SCHNEIDER-ELECTRIC  
(POWER PANELS & DRIVES)

TOZZI - INDUSTRIES

## SOLAR SECTOR

SMA- SOLAR INVERTER

ALTERNATIVE ENERGY  
PHOTOVOLTAÏC PANELS



REAL POWER DEVELOPMENT SARL

PROJECTS  
REFERENCES



# POWER

- Alarm & Operation System for 66KV Feeding (EDL substation - Kobeyat) linked to main dispatching center
- Alarm & Operation System for 66KV Feeding (EDL substation - Damour) linked to main dispatching center
- Alarm & Operation System for 66KV Feeding (EDL substation - Deir Nbouh) linked to main dispatching center
- Alarm & Operation System for 66KV Feeding (EDL substation - Mreisseh) linked to main dispatching center
- Alarm & Operation System for 66KV Feeding (EDL substation - mobile SS1)
- Alarm & Operation System for 66KV Feeding (EDL substation - Jeb-Jannine) linked to main dispatching center
- Alarm & Operation System for 66KV Feeding (EDL substation - Basta) linked to main dispatching center
- Alarm & Operation System for 66KV Feeding (EDL substation - Adma) linked to main dispatching center
- Alarm & Operation System for 66KV Feeding (EDL substation - Anjar) linked to main dispatching center
- Alarm & Operation System for 66KV Feeding (EDL substation - Batroun) linked to main dispatching center
- Alarm & Operation System for 66KV Feeding (EDL substation - mobile SS2)

Operation & Monitoring of 24 MW Power Plant in Yamen (Phase-1)

Hardware	Wago
Software	PcVue
Tags	3000
redundancy	1redundant server

Operation & Monitoring of 24 MW Power Plant in Yamen (Phase-2)

Hardware	Wago
Software	PcVue
Tags	3000
redundancy	1redundant server

Operation & Monitoring of 12 MW Power Plant in Yamen (Phase-3)

Hardware	Wago
Software	PcVue
Tags	1500
redundancy	1redundant server

Monitoring of 6 MW Power Plant in Afghanistan (wazir akbar khan)

Hardware	Wago
Software	PcVue
Tags	500

## Monitoring of 4 MW Power Plant in Lebanon (API industry)

Hardware	Wago
Software	PcVue
Tags	500
redundancy	1 redundant server

## Monitoring of 5.4 MW Power Plant in Lebanon (NDU)

Hardware	Wago
Software	PcVue
Tags	1000







Operation & Monitoring of 6 MW desalination Power Plant in Oman  
(joint venture with PcVue France)

Hardware	Wago
Software	PcVue
Tags	4500
redundancy	2 redundant servers

Monitoring & Control System for the new waste heat recovery plant  
& steam turbine (10,5 MW) of Egyptalum-Egypt  
(joint venture with PcVue France)

Hardware	Wago
Software	PcVue
Tags	25000
redundancy	2 redundant servers









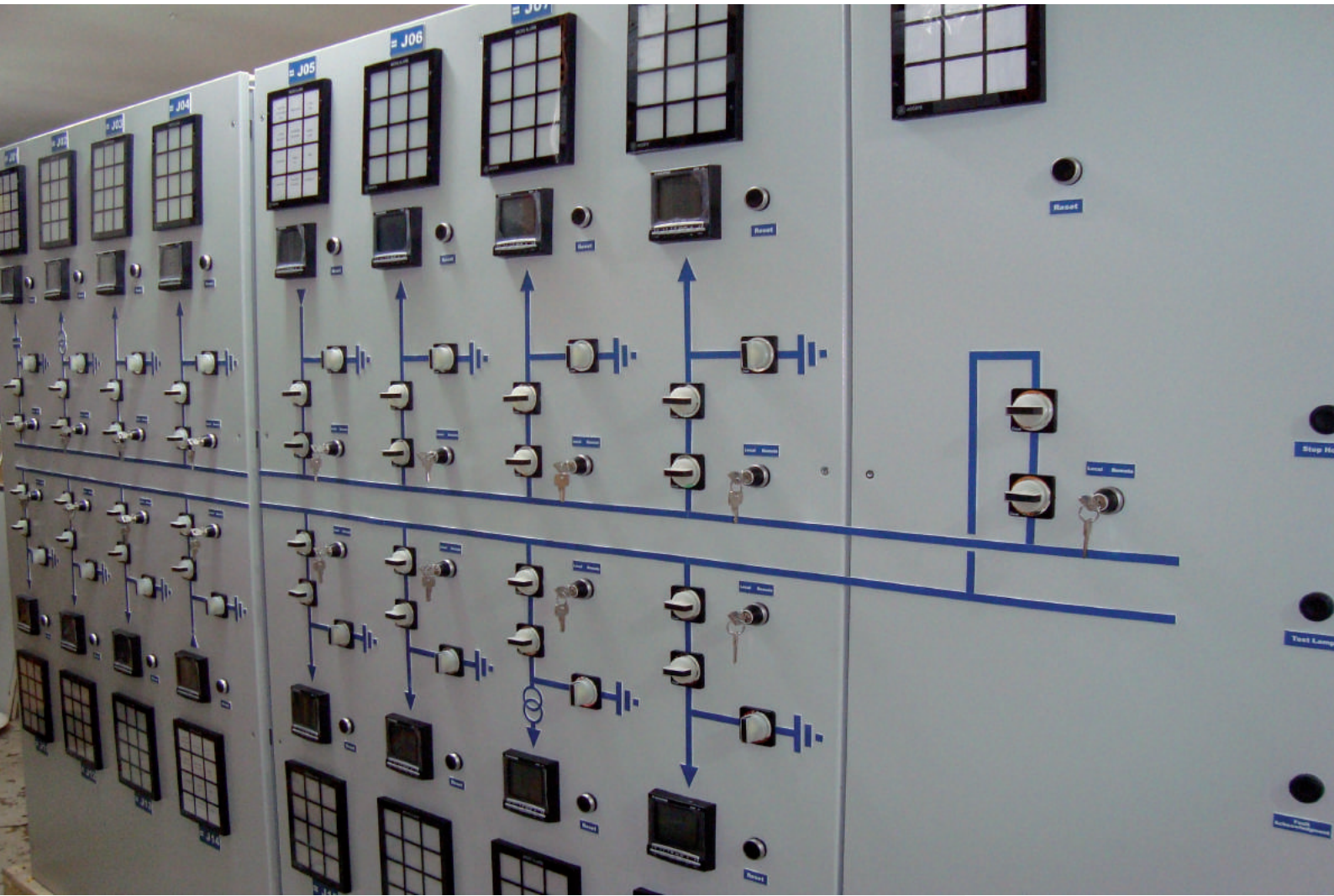
Date	Time	Event	Title
23/03/22	09:14:14.137	On - Not acknowledged	Group 3 MCB2 T...
23/03/22	09:14:14.137	On - Not acknowledged	Group 3 MCB1 T...
23/03/22	09:14:14.136	On - Not acknowledged	Group 2 MCB2 T...

- Brikama Substation**
- Login Logout
  - Home
  - Group 1
  - Group 2
  - Group 3
  - Group 4
  - MV Single Line Diagram
  - Synchro. Panel
  - LV Panel
  - DC Panel
  - UPS Panel
  - Battery Chargers
  - Alarms
  - Logs
  - Trends
  - Tips
  - Operator Notes
  - Catalogues

Cubicle: 1-1 Bus Disconnector GR-1 TO GR-3	Cubicle: 1-2 Brikama-3 Incomer-1	Cubicle: 1-3 Buffer Zone Feeder	Cubicle: 1-4 Spare Feeder (Equipped)	Cubicle: 1-5 OMVG Incomer-1	Cubicle: 1-6 Busbar Voltage Metering GR-1	Cubicle: 1-7 Bus Coupling GR-1 TO GR-2	
D.S. Racked In <input checked="" type="checkbox"/> D.S. Racked Out <input type="checkbox"/>	Earth Switch Closed <input type="checkbox"/> VT Fuse Drawn In <input checked="" type="checkbox"/> C.B. Racked In <input type="checkbox"/> C.B. Racked Out <input type="checkbox"/> C.B. Closed <input checked="" type="checkbox"/> C.B. Open <input type="checkbox"/> Remote Control <input type="checkbox"/>	Earth Switch Closed <input type="checkbox"/> VT Fuse Drawn In <input checked="" type="checkbox"/> C.B. Racked In <input type="checkbox"/> C.B. Racked Out <input type="checkbox"/> C.B. Closed <input checked="" type="checkbox"/> C.B. Open <input type="checkbox"/> Remote Control <input type="checkbox"/>	Earth Switch Closed <input type="checkbox"/> VT Fuse Drawn In <input type="checkbox"/> C.B. Racked In <input type="checkbox"/> C.B. Racked Out <input type="checkbox"/> C.B. Closed <input type="checkbox"/> C.B. Open <input type="checkbox"/> Remote Control <input type="checkbox"/>	Earth Switch Closed <input type="checkbox"/> VT Fuse Drawn In <input type="checkbox"/> C.B. Racked In <input type="checkbox"/> C.B. Racked Out <input type="checkbox"/> C.B. Closed <input type="checkbox"/> C.B. Open <input type="checkbox"/> Remote Control <input type="checkbox"/>	Earth Switch Closed <input type="checkbox"/> VT Fuse Drawn In <input type="checkbox"/> C.B. Racked In <input type="checkbox"/> C.B. Racked Out <input type="checkbox"/> C.B. Closed <input type="checkbox"/> C.B. Open <input type="checkbox"/> Remote Control <input type="checkbox"/>	VT Fuse Drawn In <input checked="" type="checkbox"/> MCB 1 Trip Signal <input type="checkbox"/> MCB 2 Trip Signal <input type="checkbox"/>	Earth Switch Closed <input type="checkbox"/> C.B. Racked In <input checked="" type="checkbox"/> C.B. Racked Out <input type="checkbox"/> C.B. Closed <input checked="" type="checkbox"/> C.B. Open <input type="checkbox"/> Remote Control <input type="checkbox"/>







**Real Power Development s.a.r.l.**  
Power & Automation Engineering  
PcVue Representative / Solution Partner

Date	Time	Event	Title
23/03/22	09:14:14.137	On - Not acknowledged	Group 3 MCB2 T...
23/03/22	09:14:14.137	On - Not acknowledged	Group 3 MCB1 T...
23/03/22	09:14:14.136	On - Not acknowledged	Group 2 MCB2 T...

9 Ala. actives  
0 Ala. ack.

---

**Brikama Substation**

Login Logout

Home

Group 1

Group 2

Group 3

Group 4

MV Single Line Diagram

Synchro. Panel

LV Panel

DC Panel

UPS Panel

Battery Chargers

Alarms

Logs

**Trends**

Tips

Operator Notes

Catalogues

23/03/22 09:19:58

Sales@real-power-development.com

**Select a Value**

- Group 1
- Group 2
- Group 3
- Group 4

Configure thresholds	Visible	Scale	color	Variable description	Real time	Unit	Average
1	<input checked="" type="checkbox"/>	1	Blue	Group 4 cubicle4-7 Active Power	430.8	NA	
2	<input checked="" type="checkbox"/>	1	Green	Group 4 cubicle4-7 Reactive Power	832.3	NA	
3	<input checked="" type="checkbox"/>	1	Red	Group 4 cubicle4-7 Apparent Power	765.1	NA	
4	<input checked="" type="checkbox"/>	1	Dark Green	Group 4 cubicle4-7 Phase-1 Voltage	16863	NA	
5	<input checked="" type="checkbox"/>	1	Light Green	Group 4 cubicle4-7 Phase-2 Voltage	16863	NA	
6	<input checked="" type="checkbox"/>	1	Dark Red	Group 4 cubicle4-7 Phase-3 Voltage	16857	NA	
7							
8							

Last hour

Current Week

Current Month

Current Year

### Monitoring 30MWc Solar Farm in the Maurice Island - Mauritius (joint venture with PcVue France)

Hardware	
Software	PcVue
Tags	5000
Scada Station	1
Webvue Clients	5
Modbus	TCP

**Real Power Development s.a.r.l**  
Power & Automtion Engineering

### Power Plant Manager - Basic

08/03/2023  
16:30:08

**Overview**

Plant Overview

**Configuration**

- Power Plant
- Inverters
- Generators
- Maingrid
- Controller

**User**

- Login
- Change Password
- Activation license

Version: Activated

Engineered by Real Power Development s.a.r.l WAGO worldwide solution partner  
Sales@real-power-development.com - Support@real-power-development.com

WAGO



**Operatin & Monitoring of 20MWc a Solar Farm in Ambatolampy - Madagascar (joint venture with PcVue France)**

Hardware	
Software	PcVue
Tags	5000
Scada Station	1
Modbus	TCP

**Operatin & Monitoring of 135MWc a Solar Farm in Manjanur- India (joint venture with PcVue France)**

Hardware	
Software	PcVue
Tags	65000
Scada Station	2 Redendant   OPC Servers
Modbus	TCP

**US-Army corps of Engineers** - Wazir Akbar Khan-Afghanistan. Power Distribution Panel boards (1800A) \*2 form 3b.

**US-Army corps of Engineers** - Wazir Akbar Khan-Afghanistan. Power Distribution Panel boards (1250A) \*7 form 3b

**US-Army corps of Engineers**-Wazir Akbar Khan-Afghanistan. Totalizing Panel boards (5000A) form 3b

**US-Embassy** - congo (Special Mission-2013)

#### **Romania-Jan2010**

Poultry Automated System (1 Farm 120 Panel Boards Fully Automated) (Romania-Nov2011). Poultry Automated System (3 Farms 120 Panel Boards/ Farm fully Automated)

**Congo-Brazzaville** 2015 MV-SS Kiosk 11/0.4KV 20KVA complete assembly

#### **Notre Dame University (NDU) phase-2 including:**

Complete MV/LV Substation Preparation 6.4 MVA ATS/Main Distribution Panels board 1600A TTA form 4b\*4 Totalizing Panel Board 6300A TTA form 3b  
Distribution Panel Board 1000A TTA Form 2b\*7 Lighting Panel board 800A\*2 Iler pump controller 55KW\*3 (Siemens-PLC's)

#### **US-Army / LEB-Army Riyak Flight Simulator**

ATS/Distribution Panel Board 1000A form 2b and small distribution panels

#### **International College - Beirut Rehabilitation phase 1 & 2 Loft-Achrafieh**

ATS/Distribution Panel Boards 630A\*7 form 2b Sub-main distribution Panel boards 63A\*100

### **Sheikh Hamad Bin Khalifa (Prince of Qatar) Palace**

Complete LV substation including Totalizing Panel 3200A form 3b  
ATS and distribution Panel Boards 2500A form 2b Distribution  
Panel Boards form 2b VFD's Chiller Pumps Controller 65KW\*4  
(Siemens-PLC's)

### **Tanios Hotel 5\***

(Aley) Complete LV substation including Totalizing Panel 5400A form 3b  
ATS and distribution Panel Boards 1250A\*4 form 2b  
Distribution Panel Boards form 2b\*160 VFD's Chiller Pumps  
Controller 65KW\*6 (Siemens-PLC's)

### **LEBANESE AMERICAN UNIVERSITY-LAU - ST, JHON HOSPITAL - JOUNIEH**

Complete LV substation including Totalizing Panel 3200A form 3b  
ATS and distribution Panel Boards 1600A form 2b Distribution Panel  
Boards 250/630A form 2b\*7 VFD's Chiller Pumps Controller 65KW\*4  
(Siemens-PLC's)

### **Notre Dame de Secours Hospital -Jbeil**

Rehabilitation of the New Emergency Department

### **Beirut Terraces 25Th Floor Tower - Down Town | Beirut**

Complete MV/LV 24KV /380 V 4.8 MVA substation including  
MV surge arresters 24KV All Mechanical Panels for monitoring & control

### **B115 - Tower**

Complete LV- offices Automatic Transfer Switches

### **St. Rita School**

Complete LV ATS / MDB -1000A

### **Students House**

Totalizing panel MDB's, ATS, & SDB's for 122 student apartments 1000A

### **Galleria Mall - Kaslik**

Complete MV / LV panel board 3200A (Totalizing Panels, MDB's SDB's &  
Lighting panels)

### **Port side Tower - Achrafieh**

Complete LV panel board (Totalizing Panels, MDB's SDB's & Lighting panels)

### **API (Advanced Plastic Industry)**

Complete LV panel Board 1600A form 2b for complex machinery

**REAL POWER DEVELOPMENT SARL**  
(companies representatives)

**REAL POWER DEVELOPMENT NIGERIA AND WEST AFRICA**  
**STUDIO LIGHT PRO ENTREPRISES LIMITED**

**Address:**

**Lagos:** Landmark center Plot 3/4 Water Corporation  
Road, Victoria Island, Lagos, Nigeria.

**Abuja:** The capital hub, suite 009B, 272 Ahmadu Bello  
way, Abuja, FCT, Nigeria.

**Email:**

operations@studiolight-ng.com

akhoury@studiolight-ng.com

rpd@studiolight-ng.com